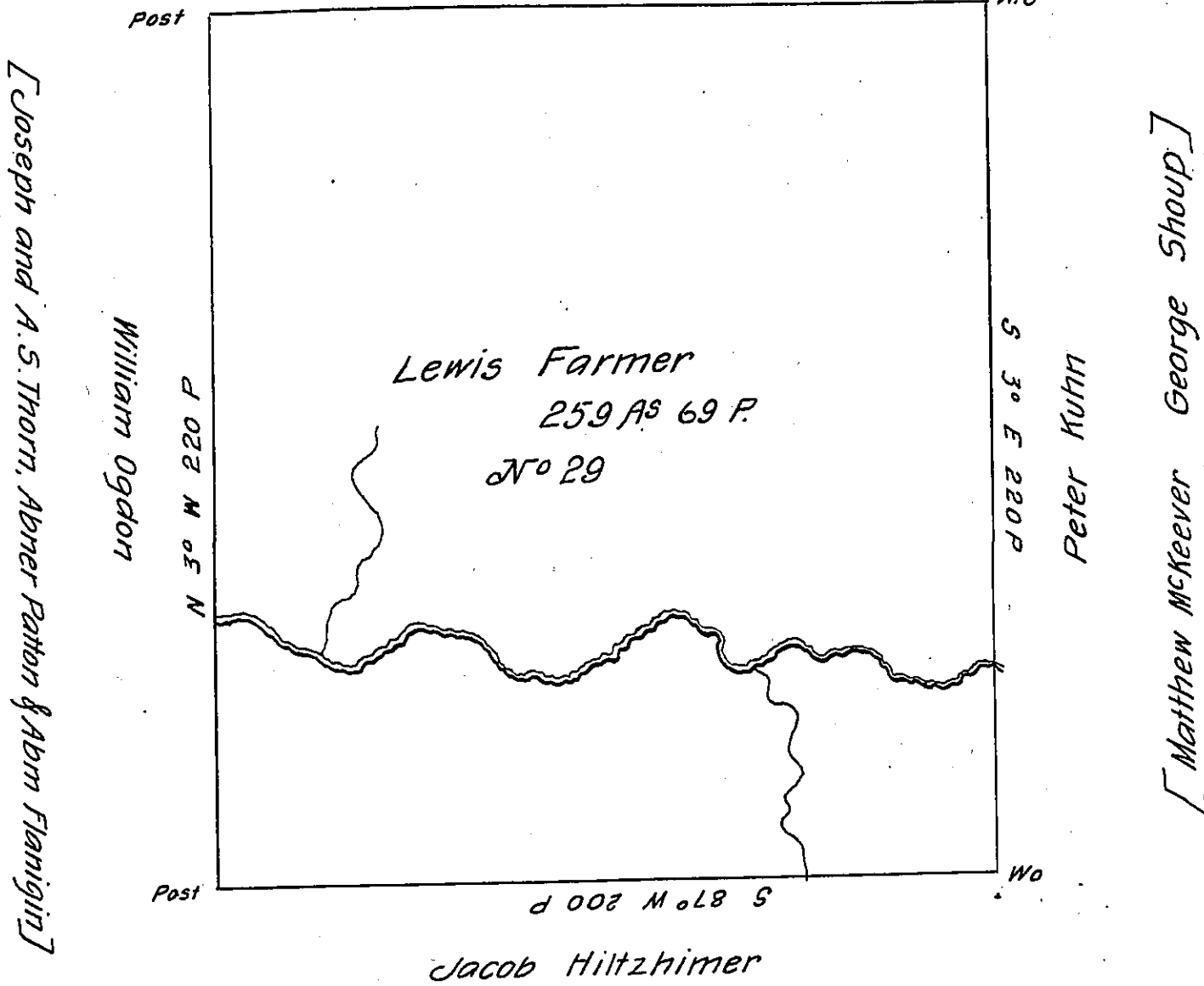


[Lewis Millinger, John H Millinger, Eli Balph]

Ebenezer Branham

N 87° E 200 P



[Matthias Hilfinger — Hutchison]

Surveyed Nov^r 6th day 1794 259 A's 69 P. of land, with the allowance of six per Cent. In persuance of a Warrant granted Lewis Farmer the 4th day of March 1794 Situated in District No 8 N. W. of the Allegheny River, on the Waters of the big Connoqueenessing—

I do hereby Certify that the foregoing is a true Copy of a Survey recorded in the entry book of Stephen Gappin, remaining in the County Surveyors office in Butler County, and that I have examined it and found it Correct.

Nathan M. Slater C.S.

To the Hon Robt B. Beath

Surveyor Gen^l

March 1st 1873

IN TESTIMONY that the above is a copy of the original remaining on file in the Department of Internal Affairs of Pennsylvania, made conformably to an Act of Assembly approved the 16th day of February, 1833, I have hereunto set my Hand and caused the Seal of said Department to be affixed at Harrisburg, this twelfth day of January 1905.

James R. [Signature]
Secretary of Internal Affairs